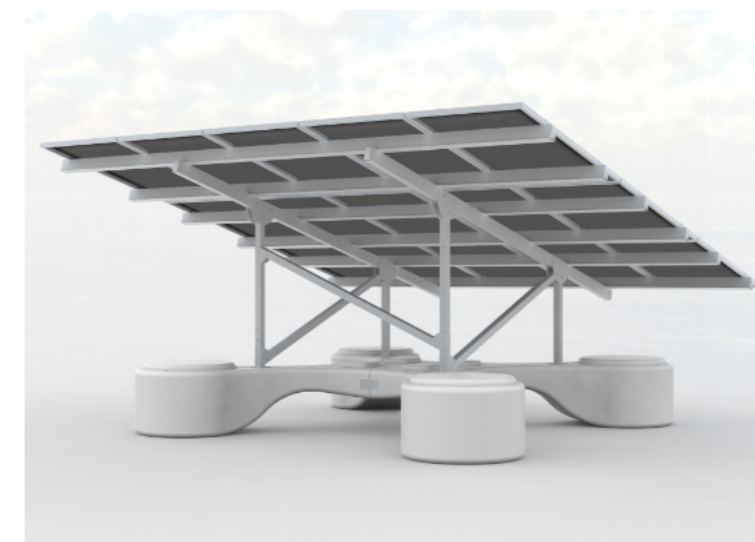
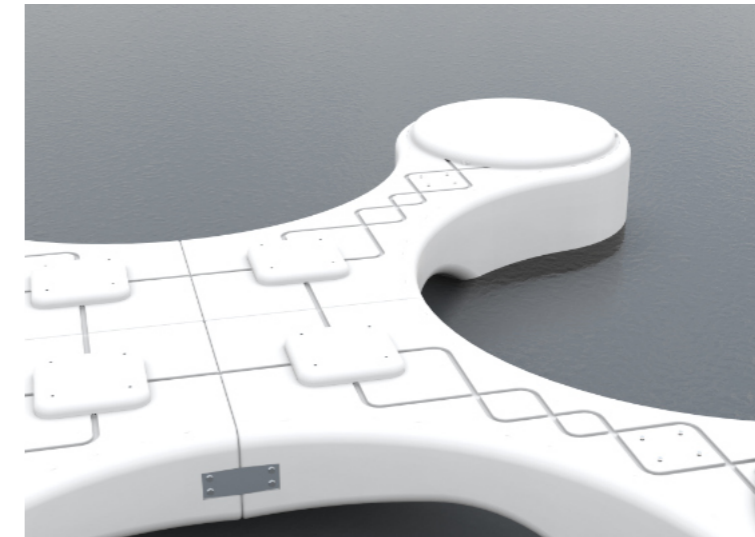


Ben Rhyder
Design Folio

Solar Lily

Final Year Project

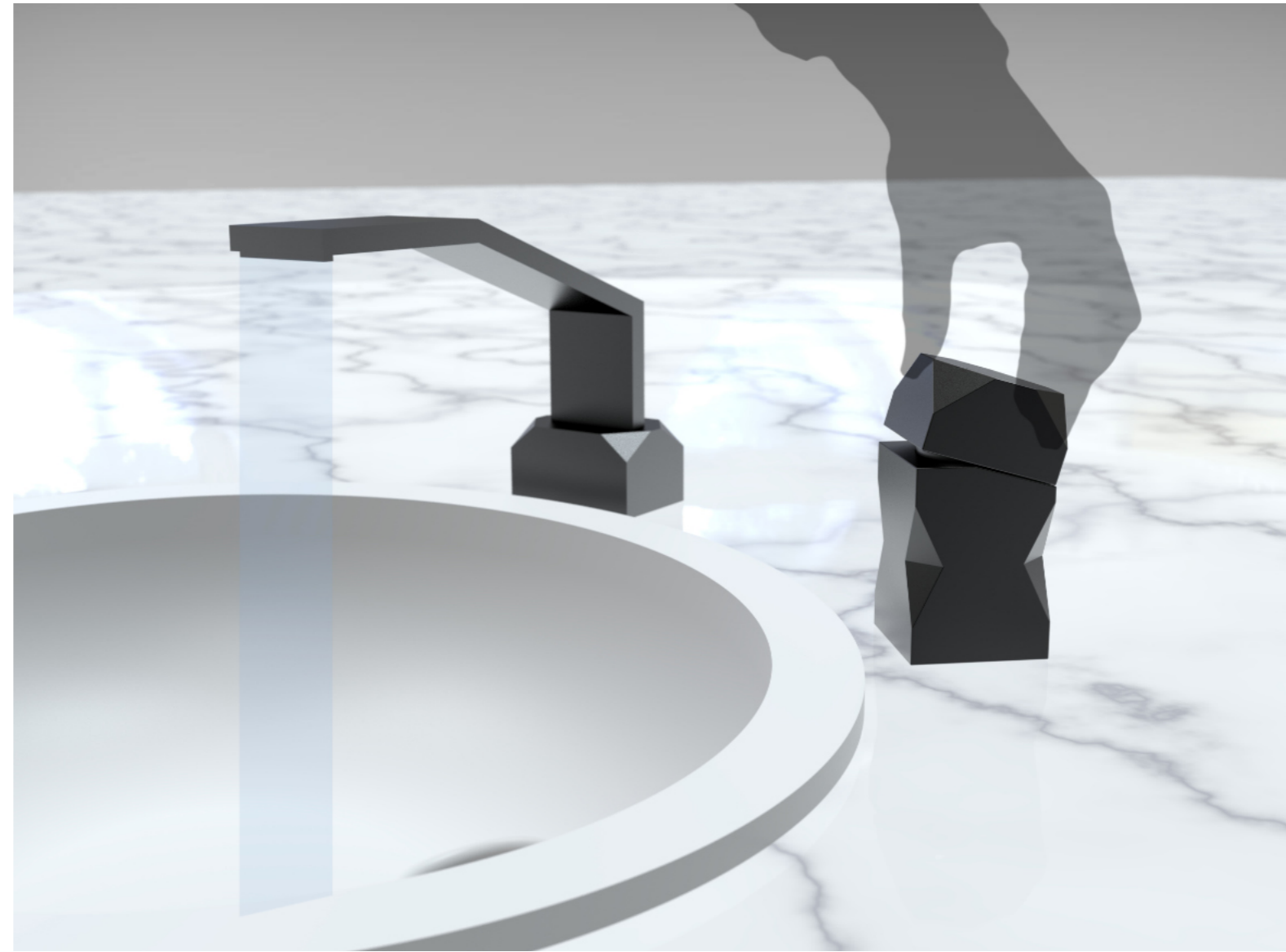




Floating solar array with 2 axis sun tracking, Solar Lily uses minimal mechanical components and takes advantage of open bodies of water, increasing power generation by up to 30% when compared to a ground based system.

Metria

Mixer tap



Mixer tap with matched faucet, die cast brass with satin chrome finish.

Photography



An interest in wedding photography is driven by attention to detail and creativity

Eclipse

Sofa support rail



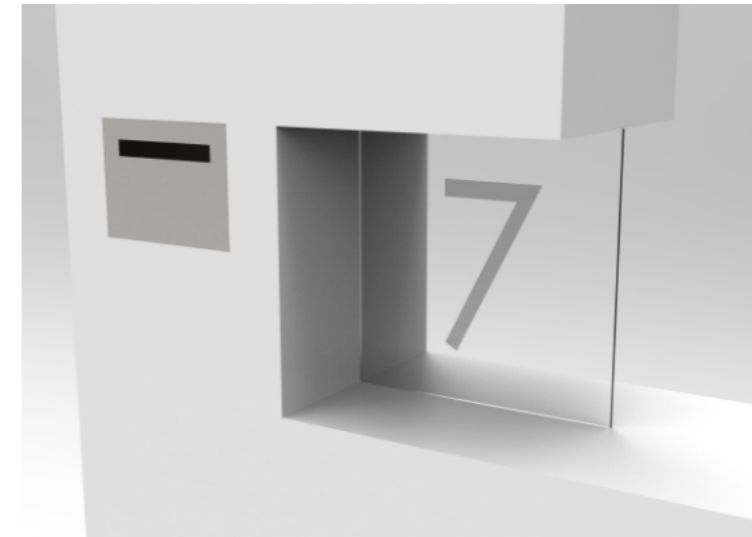


An alternative to clinically styled grab rails, Eclipse offers more stylish assistance that blends in with home décor



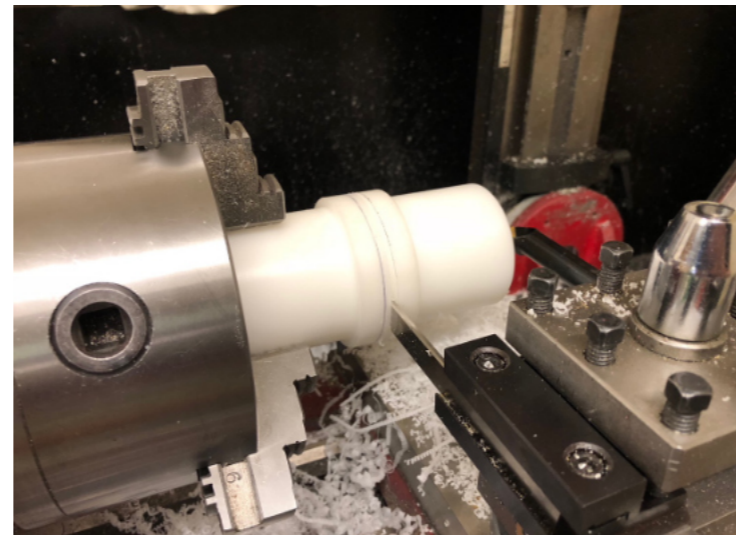
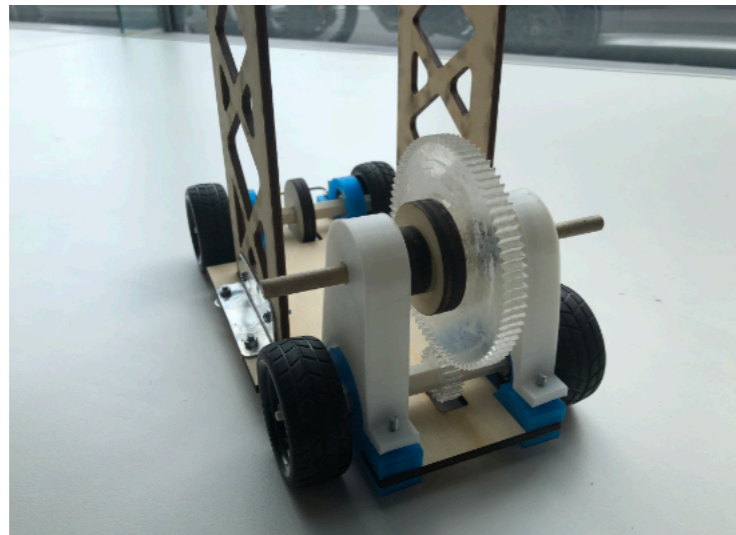
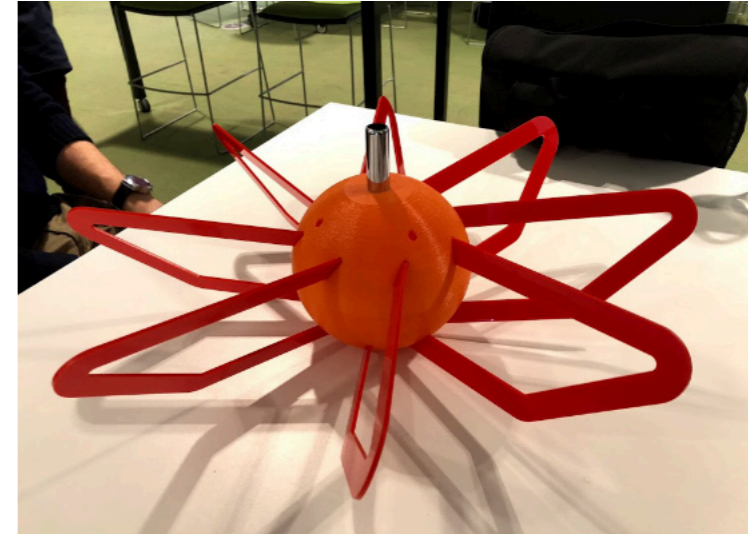
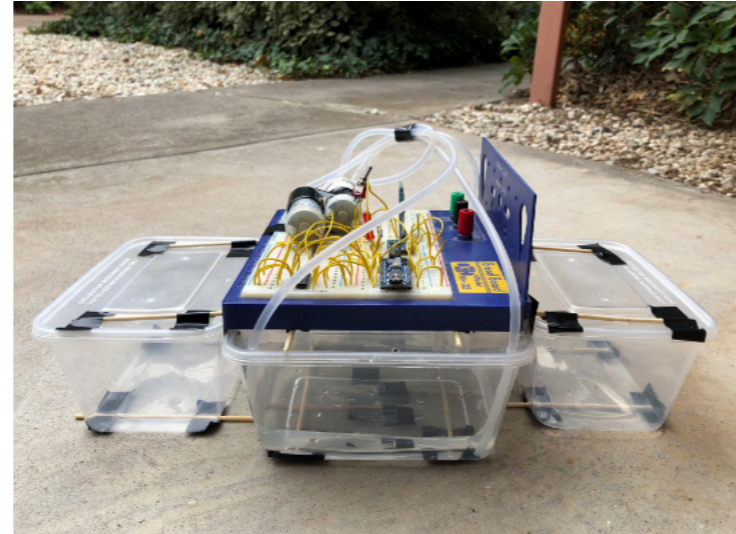
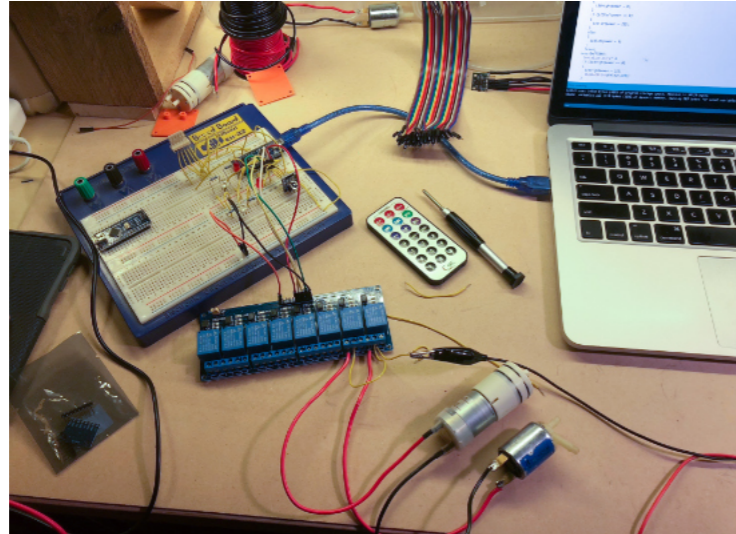
Greenblock

Mailbox



Mailbox solution doubling as a low front wall, can easily accept most off-the-shelf mailbox inserts. The frosted glass house number can be customised by the client to add a personal touch.

Prototyping



Experience with microprocessors and other electronics, creating functional models, rapid prototyping techniques and operating workshop equipment such as a lathes, mills, drill presses.

Milkshake topping

3L PET bottle



Blow moulded PET joining to a pre-moulded ABS handle, this new bottle maintains a unique but recognisable aesthetic for Edlyn's milkshake toppings and cordials.





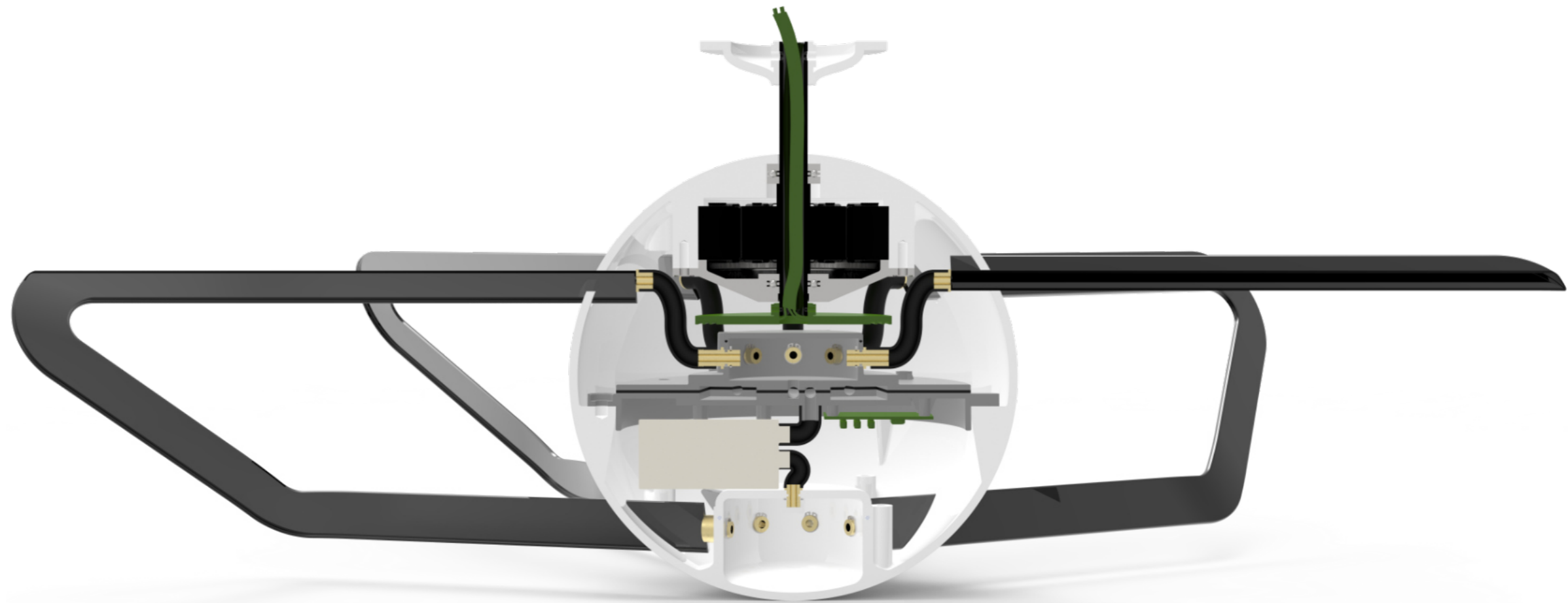
Mechanics

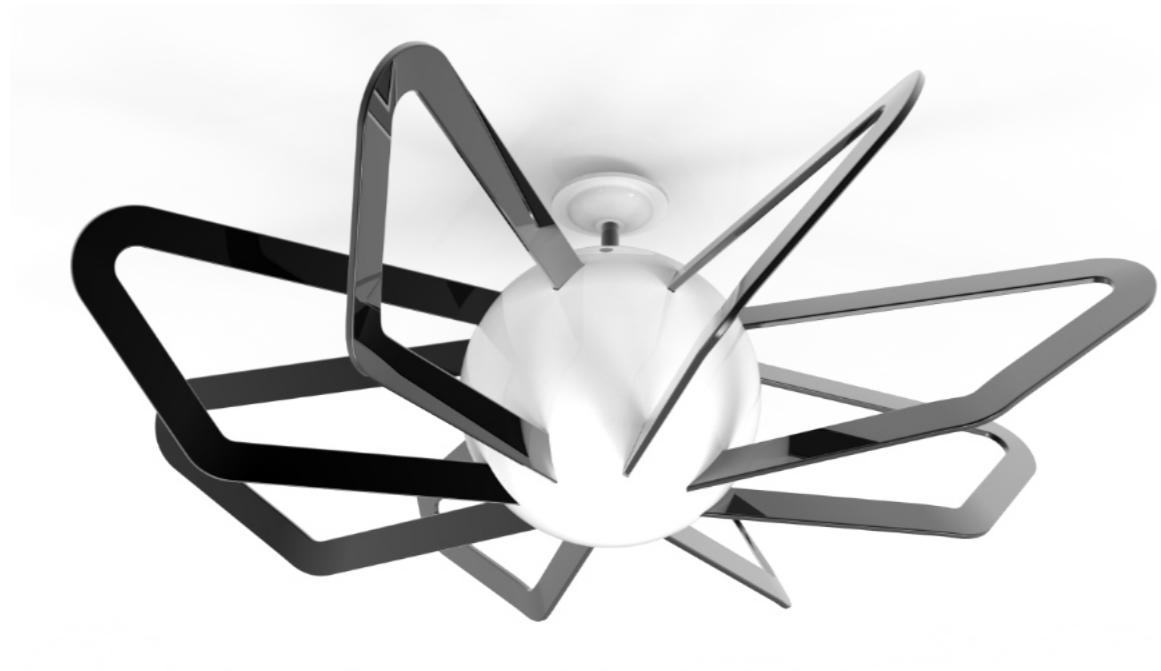


A hobby of automotive mechanics and fabrication develops and encourages my engineering mindset. It's given me a wide range of experience from general maintenance through to engine reconditioning and performance modifications.

NoGlo

Safe indoor heating



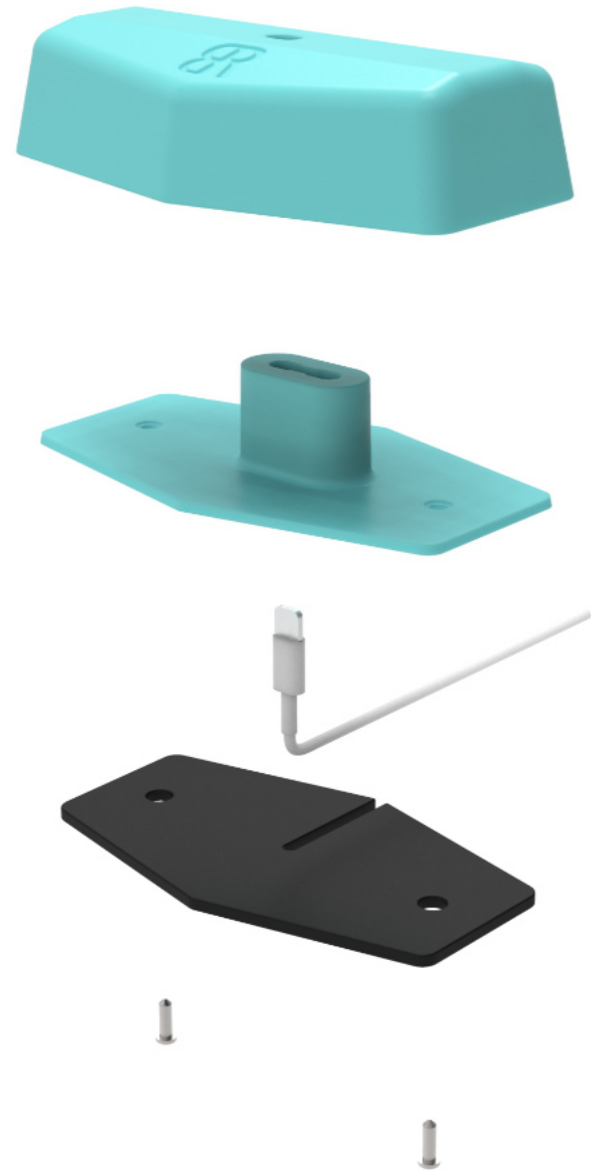


NoGlo is an indoor heater designed primarily for camper vans. Heated liquid is pumped through the fins to heat the space without any glowing elements.



.dock

Phone dock



.dock makes use of a standard lightning cable to form a low cost, simple to manufacture phone dock. Components are assembled by the end user around a cable they already own.



Work Experience

See resume for more details



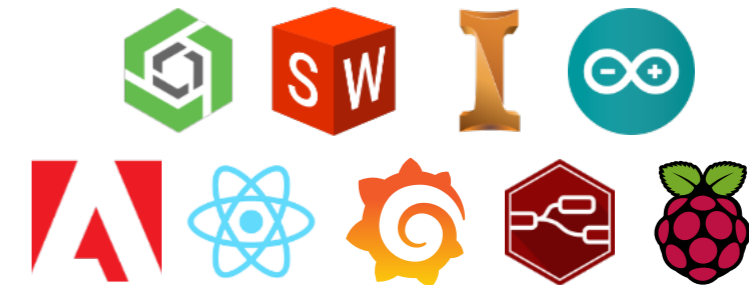
JARDAN

- CAD Models and drawings for manufacturing
- Commissioning factory equipment
- Operating prototyping equipment
- Data management



eSHEPHERD
AGERSENS

- Hardware design and modification
- Lead mobile app developer
- Various IoT platforms
- Systems engineering



Familiarity with a wide variety of software and hardware platforms

benrhyder.com